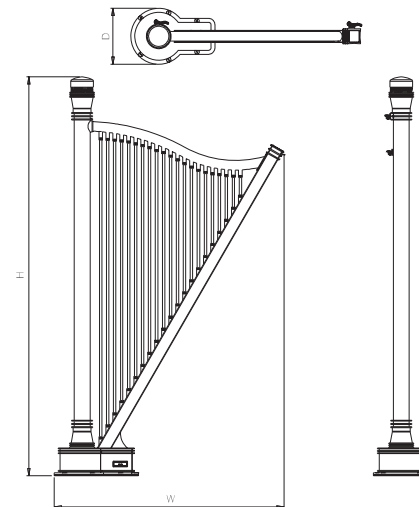
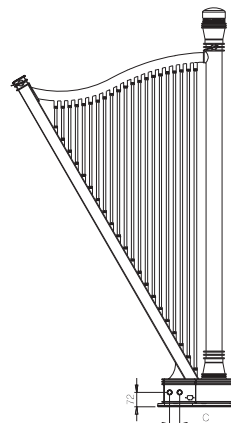
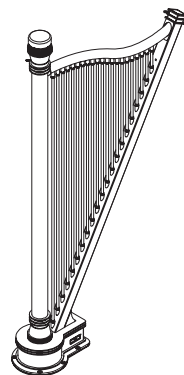




Adagio

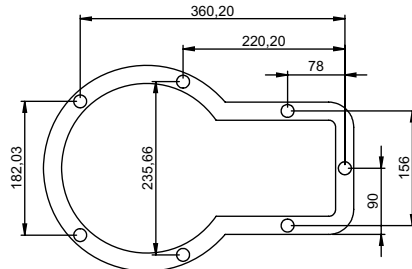
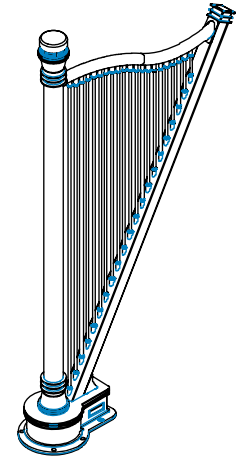
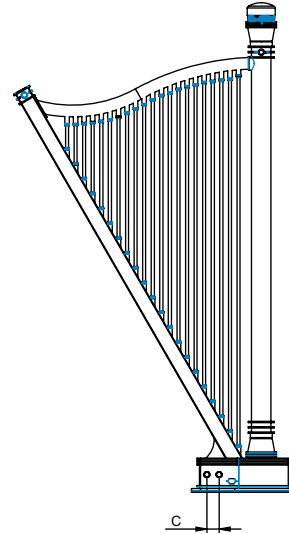
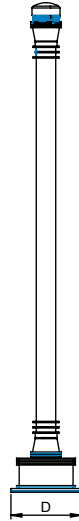
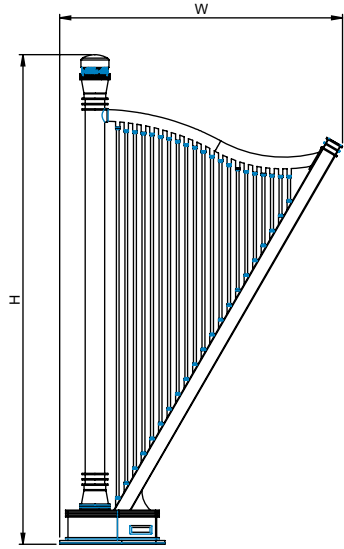


<i>material</i>	<i>finish</i>	<i>electric version</i>	<i>wall installation</i>	<i>warranty</i>
<i>stainless steel</i>	<i>satin polished</i>	<i>heating element included</i>	<i>floor standing</i>	<i>10 years</i>

max. working pressure: 8 bar
max. working temperature: 95°C
all dimensions are in mm.
connections 1/2"
digital display screen
customizable remote control
changing LED lights

Product Code	Width	Height	Depth	Connection Centers	Tube Quantity	Assembly Axis		Weight	Water Capacity	THERMAL POWER		
	W	H	D	C		S	L	kg.	lt.	btu	k/cal	watt
ADA115020002109	1150	2000	280	50	21	-	-	44	15,2	5566	1402	1631

Adagio



Hole Template

Product Code	Width	Height	Depth	Connection Centers	Tube Quantity	Assembly Axis		Weight	Water Capacity
	W	H	D	C		S	L	kg.	lt.
ADA115020002109	1150	2000	280	50	21	-	-	44.0	15.2