

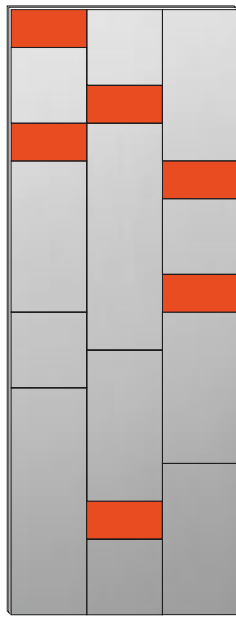
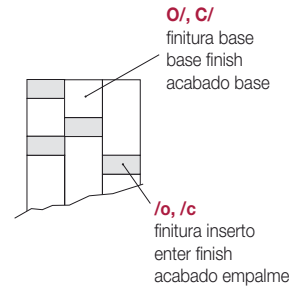


**Forme pulite e minimaliste per tutti gli spazi.**

Clean and minimalist forms for all spaces.

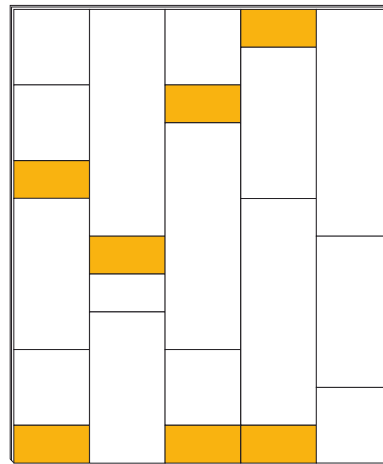
Formas limpias y minimalistas para todos los espacios.

**Combinazioni disponibili**  
**Available combinations**  
**Combinaciones disponibles**



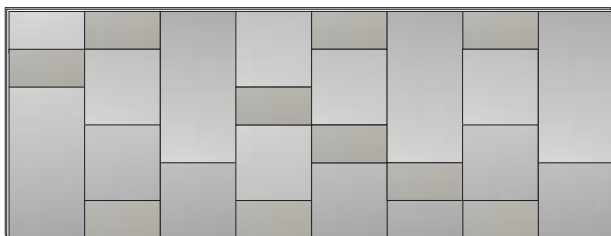
H 1600 x L 600 - 1142 w/ $\Delta t$  50° K

O/c



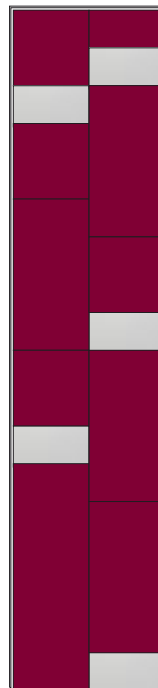
H 1200 x L 1000 - 1503 w/ $\Delta t$  50° K

C/c



H 600 x L 1600 - 1392 w/ $\Delta t$  50° K

O/o



H 1800 x L 400 - 840 w/ $\Delta t$  50° K

C/o

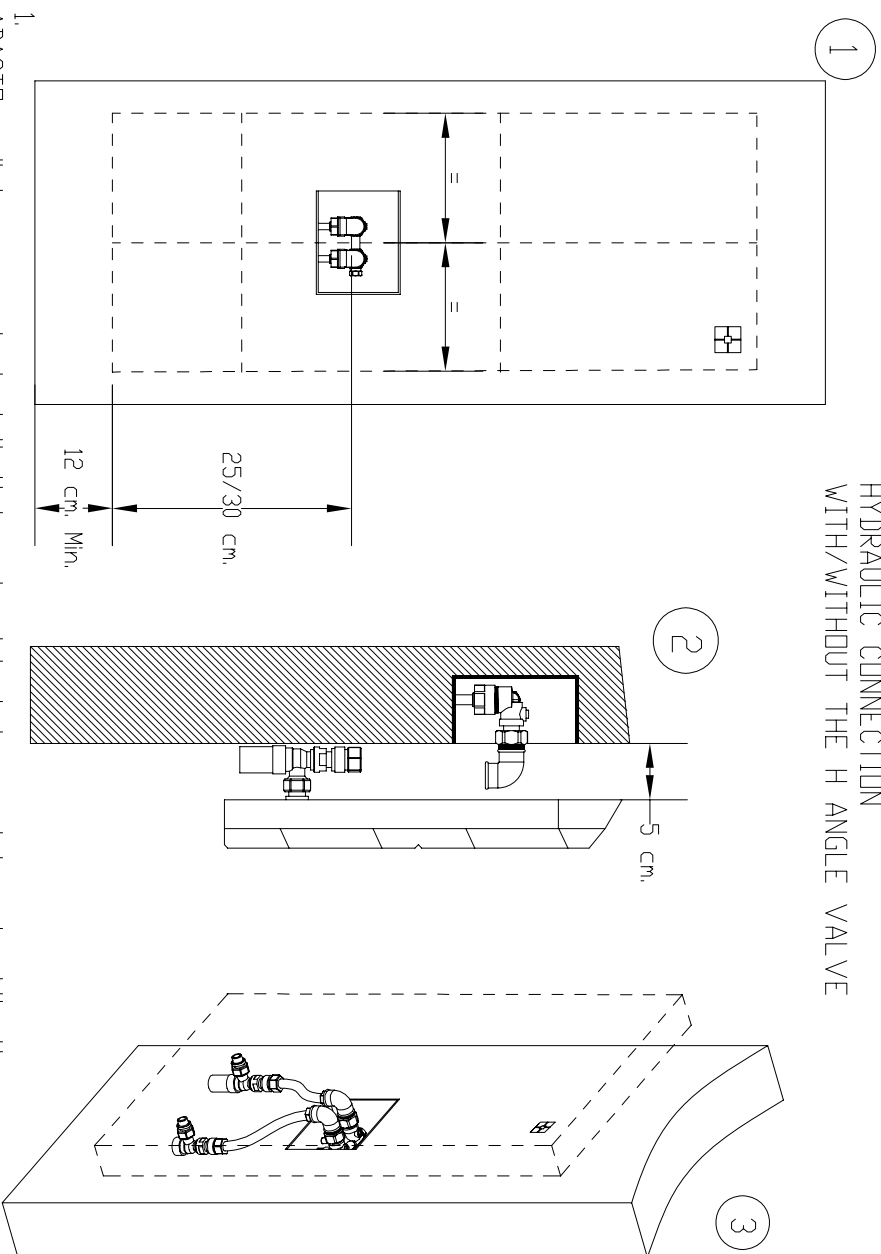
**Dimensioni disponibili - available sizes - dimensiones disponibles**

H mm	L mm   n. colonne - no. of columns - n. columnas									
	200   1	400   2	600   3	800   4	1000   5	1200   6	1400   7	1600   8	1800   9	2000   10
500										
600		348	522	696	870	1044	1218	1392	1566	1740
800		435	653	871	1089	1306	1524	1742	1959	2177
1000		519	779	1039	1299	1558	1818	2078	2337	2597
1200	301	601	902	1202	1503	1804	2104			
1400	341	682	1023	1364	1705	2045				
1600	381	761	1142	1522	1903					
1800	420	840	1261	1681	2101					
2000	460	919	1379	1838	2298					
2200	499	998	1497	1996	2495					
2400	539	1078	1617	2156	2695					

**Resa termica**  
**Thermal power**  
**Rendimiento térmico**  
**w/ $\Delta t$  50°K EN 442**



HYDRAULIC CONNECTION  
WITH/WITHOUT THE H ANGLE VALVE



1. ADADCTD radiator, easy to install, it is not subject to any interaxis obligations. ADADCTD need to be positioned 12 cm minimum from the floor in order to enable the balancing movement system to work. The H angle valve is to be positioned vertically at 25/30 cm from the bottom of the radiator and horizontally at the centre of the radiator, with about 15cm tolerance.

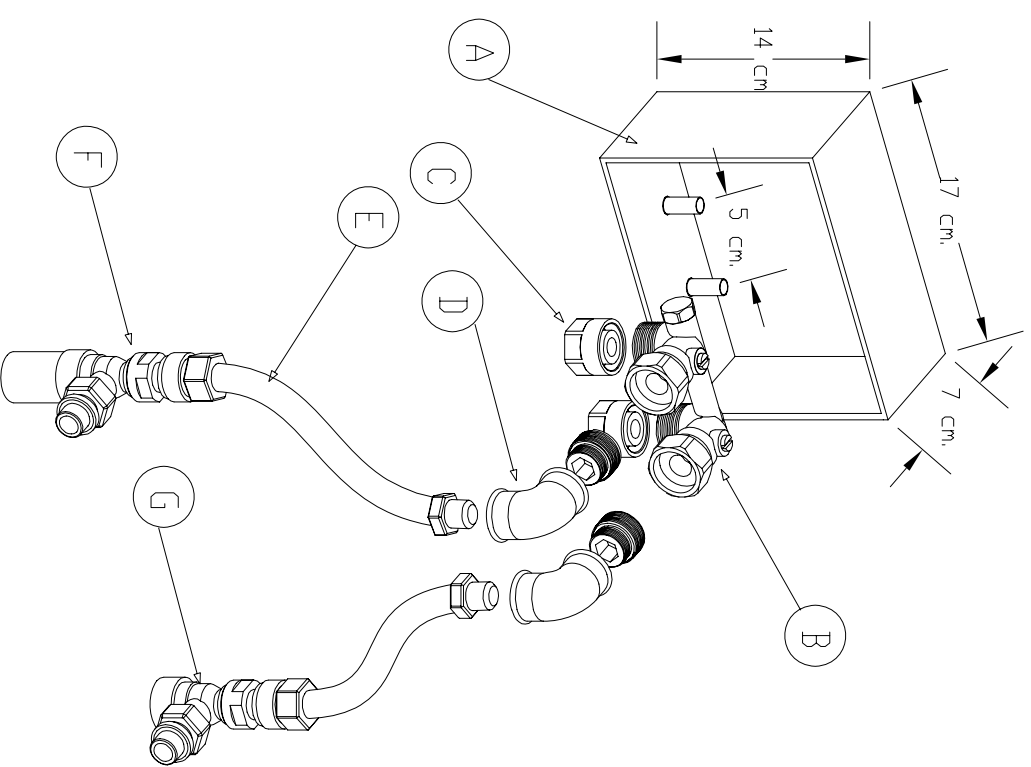
2. The ½" F-F fitting elbows are to be positioned on the H angle Valve . The fitting elbows must not stick out more than 5 cm from the wall.

3. The valve and lockshield valve are already installed on the radiator. Connect valve and lockshield valve to the fitting elbows through the flexible hoses.

IN CASE OF INSTALLATION WITHOUT THE H ANGLE VALVE, SAME PROCEDURE IS TO BE USED, ADDING UP A BALL VALVE AFTER THE FITTING ELBOWS.

The ADADCTD connection system via flexible hoses enables the easy replacement of a traditional radiator. For further information please contact PROJECTCLIMA Technical Office.

H ANGLE VALVE



- A In-wall box
- B H Angle Valve
- C Copper / Multilayer pipe adapter
- D ½" F-F Fitting Elbow
- E Stainless Steel and EPDM flexible hose
- F Valve
- G Lockshield valve

