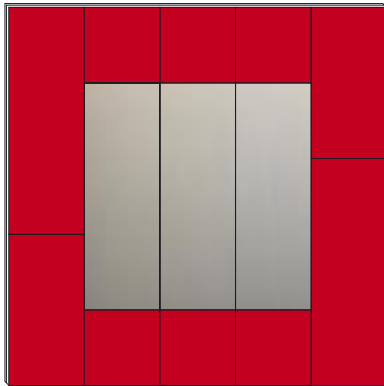


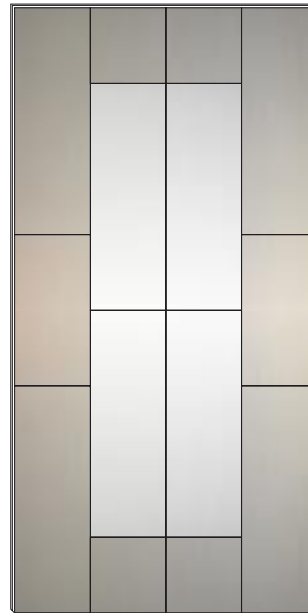


Un'elegante calda cornice.
 A warm elegant frame.
 Un elegante y caliente entorno.



H 1000 x L 1000 - 1299 w/Δt 50° K

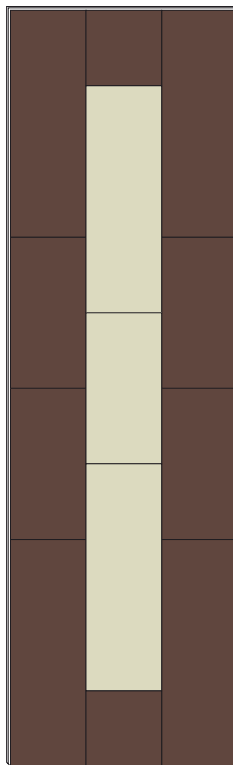
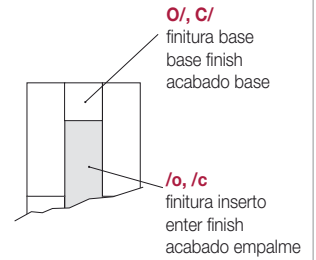
C/o



H 1600 x L 800 - 1522 w/Δt 50° K

O/o

Combinazioni disponibili
Available combinations
Combinaciones disponibles



H 2000 x L 600 - 1379 w/Δt 50° K

C/c



H 600 x L 1600 - 1392 w/Δt 50° K

O/c

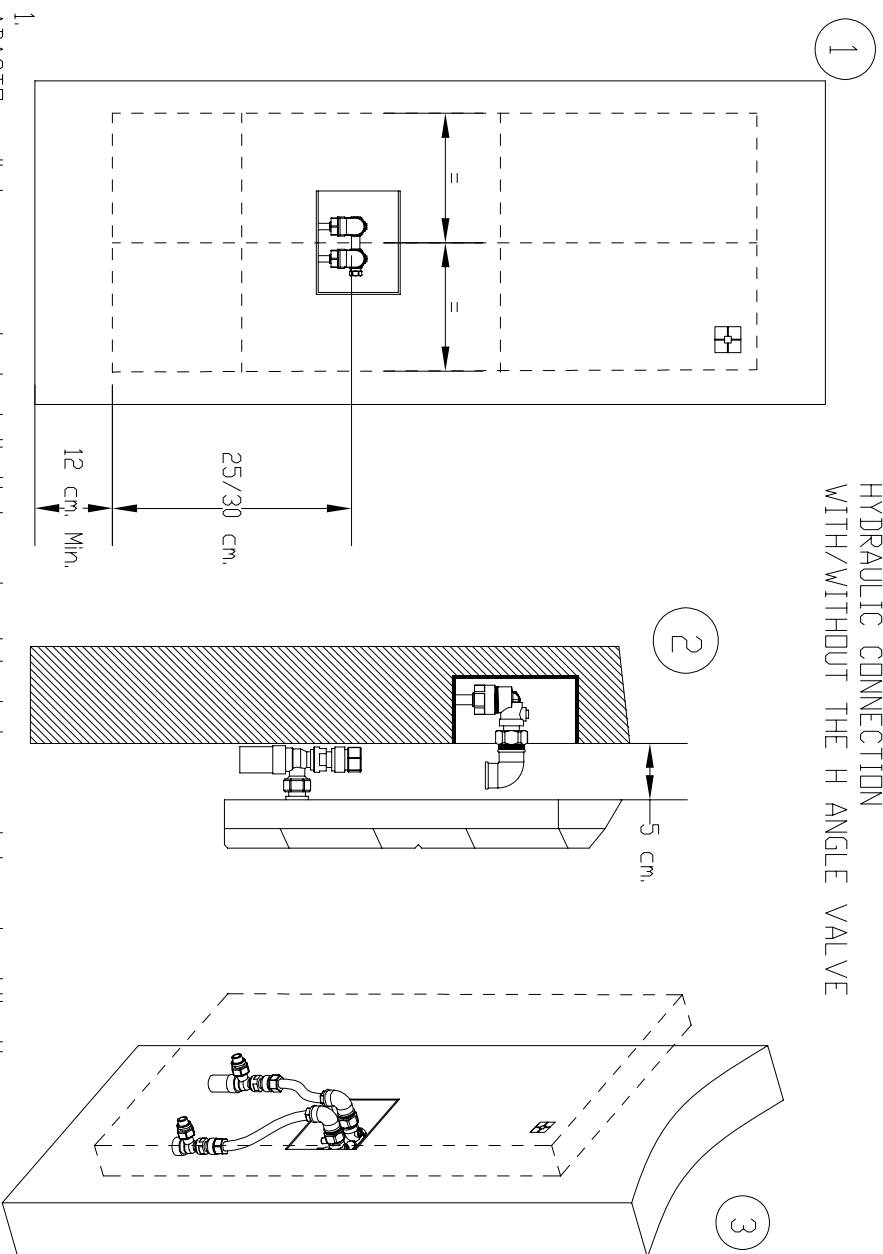
Dimensioni disponibili - available sizes - dimensiones disponibles

H mm	L mm n. colonne - no. of columns - n. columnas									
	200 1	400 2	600 3	800 4	1000 5	1200 6	1400 7	1600 8	1800 9	2000 10
500					756	907	1058	1210	1361	1512
600			522	696	870	1044	1218	1392	1566	1740
800			653	871	1089	1306	1524	1742	1959	2177
1000			779	1039	1299					
1200			902	1202	1503	1804				
1400			1023	1364	1705	2045				
1600			1142	1522	1903					
1800			1261	1681	2101					
2000			1379	1838	2298					
2200			1497	1996	2495					
2400			1617	2156	2695					

Resa termica
Thermal power
Rendimiento térmico
w/Δt 50°K EN 442



HYDRAULIC CONNECTION
WITH/WITHOUT THE H ANGLE VALVE



1. ADADCTD radiator, easy to install, it is not subject to any interaxis obligations. ADADCTD need to be positioned 12 cm minimum from the floor in order to enable the balancing movement system to work. The H angle valve is to be positioned vertically at 25/30 cm from the bottom of the radiator and horizontally at the centre of the radiator, with about 15cm tolerance.

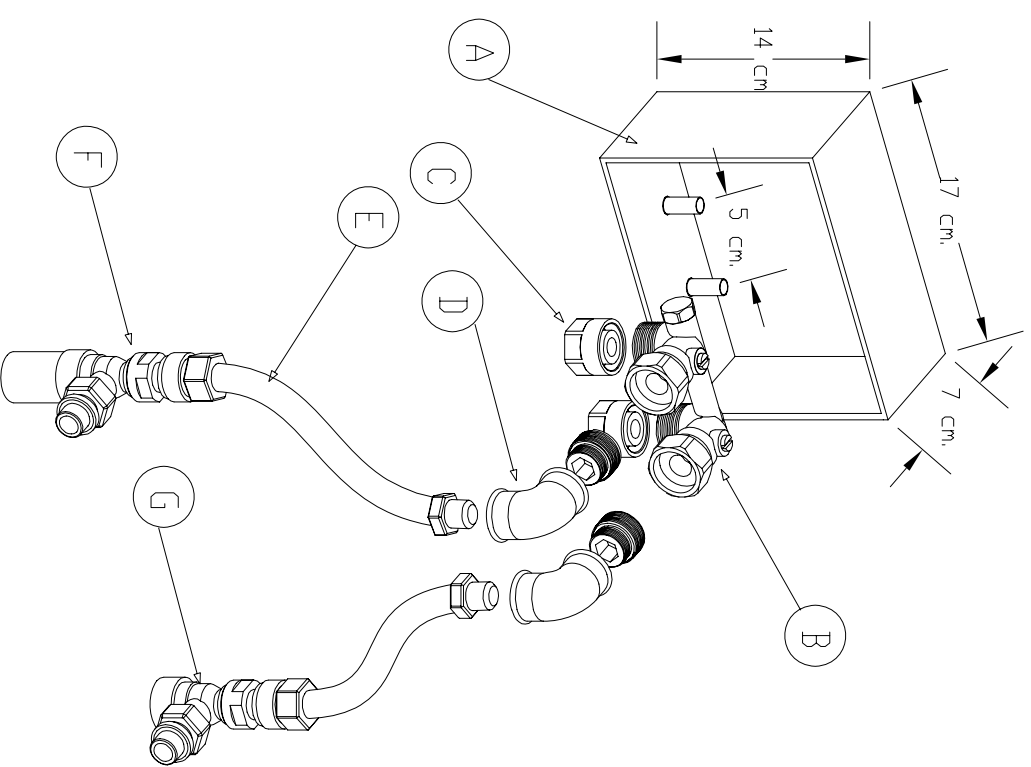
2. The ½" F-F fitting elbows are to be positioned on the H angle Valve . The fitting elbows must not stick out more than 5 cm from the wall.

3. The valve and lockshield valve are already installed on the radiator. Connect valve and lockshield valve to the fitting elbows through the flexible hoses.

IN CASE OF INSTALLATION WITHOUT THE H ANGLE VALVE, SAME PROCEDURE IS TO BE USED, ADDING UP A BALL VALVE AFTER THE FITTING ELBOWS.

The ADADCTD connection system via flexible hoses enables the easy replacement of a traditional radiator. For further information please contact PROJECTCLIMA Technical Office.

H ANGLE VALVE



- A In-wall box
- B H Angle Valve
- C Copper / Multi-layer pipe adapter
- D ½" F-F Fitting Elbow
- E Stainless Steel and EPDM flexible hose
- F Valve
- G Lockshield valve

