



Eleganti e luminose sfumature metalliche.

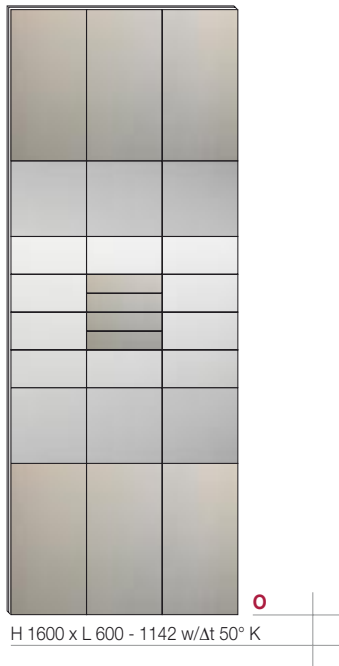
Elegant and shiny metallic shades.

Elegantes y luminosos matices metálicos.

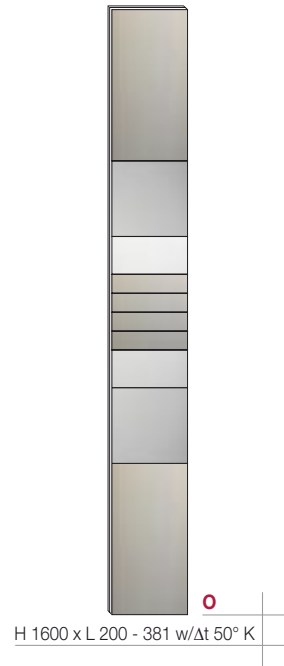
Combinazioni disponibili
3 ossidi misti (O)

Available combinations
3 mixed oxides (O)

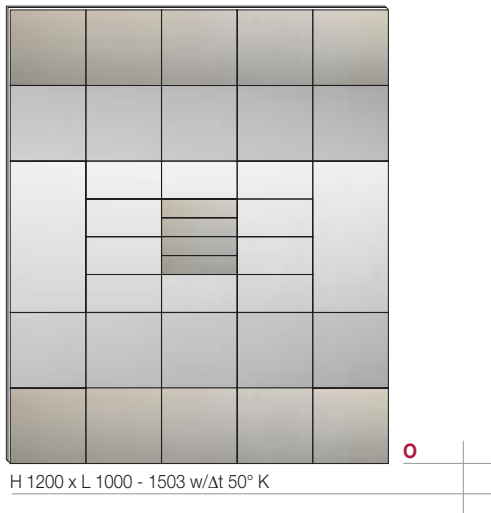
Combinaciones disponibles
3 óxidos mixtos (O)



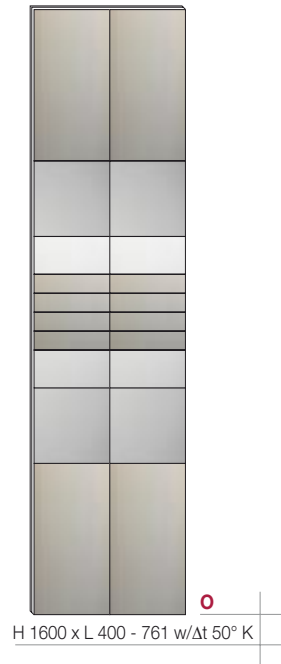
H 1600 x L 600 - 1142 w/Δt 50° K



H 1600 x L 200 - 381 w/Δt 50° K



H 1200 x L 1000 - 1503 w/Δt 50° K



H 1600 x L 400 - 761 w/Δt 50° K

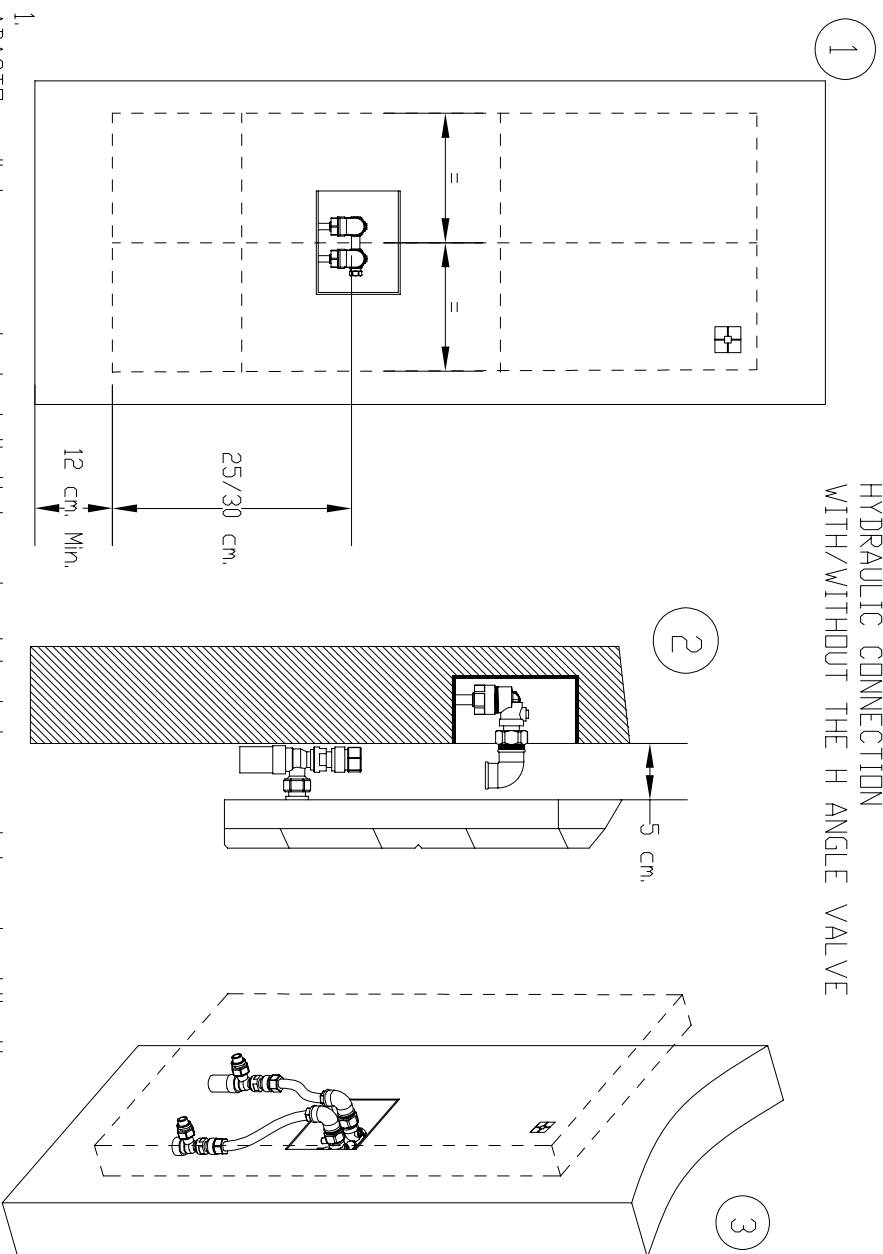
Dimensioni disponibili - available sizes - dimensiones disponibles

H mm	L mm n. colonne - no. of columns - n. columnas									
	200 1	400 2	600 3	800 4	1000 5	1200 6	1400 7	1600 8	1800 9	2000 10
500										
600										
800										
1000										
1200	301	601	902	1202	1503	1804				
1400										
1600	381	761	1142	1522	1903					
1800										
2000	460	919	1379	1838	2298					
2200										
2400	539	1078	1617	2156	2695					

Resa termica
Thermal power
Rendimento térmico
w/Δt 50°K EN 442



HYDRAULIC CONNECTION
WITH/WITHOUT THE H ANGLE VALVE



1. ADADCTD radiator, easy to install, it is not subject to any interaxis obligations. ADADCTD need to be positioned 12 cm minimum from the floor in order to enable the balancing movement system to work. The H angle valve is to be positioned vertically at 25/30 cm from the bottom of the radiator and horizontally at the centre of the radiator, with about 15cm tolerance.

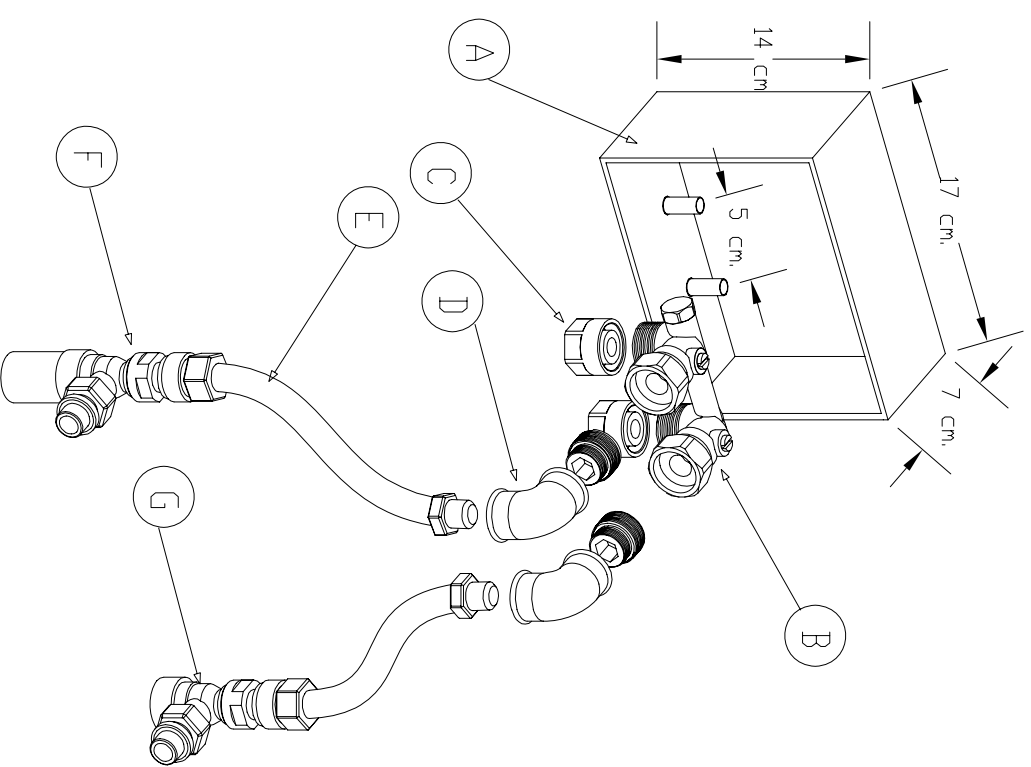
2. The ½" F-F fitting elbows are to be positioned on the H angle Valve . The fitting elbows must not stick out more than 5 cm from the wall.

3. The valve and lockshield valve are already installed on the radiator. Connect valve and lockshield valve to the fitting elbows through the flexible hoses.

IN CASE OF INSTALLATION WITHOUT THE H ANGLE VALVE, SAME PROCEDURE IS TO BE USED, ADDING UP A BALL VALVE AFTER THE FITTING ELBOWS.

The ADADCTD connection system via flexible hoses enables the easy replacement of a traditional radiator. For further information please contact PROJECTCLIMA Technical Office.

H ANGLE VALVE



- A In-wall box
- B H Angle Valve
- C Copper / Multilayer pipe adapter
- D ½" F-F Fitting Elbow
- E Stainless Steel and EPDM flexible hose
- F Valve
- G Lockshield valve

