

Kalmar add_on regular form

The normal add_on model is installed on the wall like a traditional radiator and it has a well defined rectangular shape.

VERSIONS AVAILABLE

- WATER

COLOURS

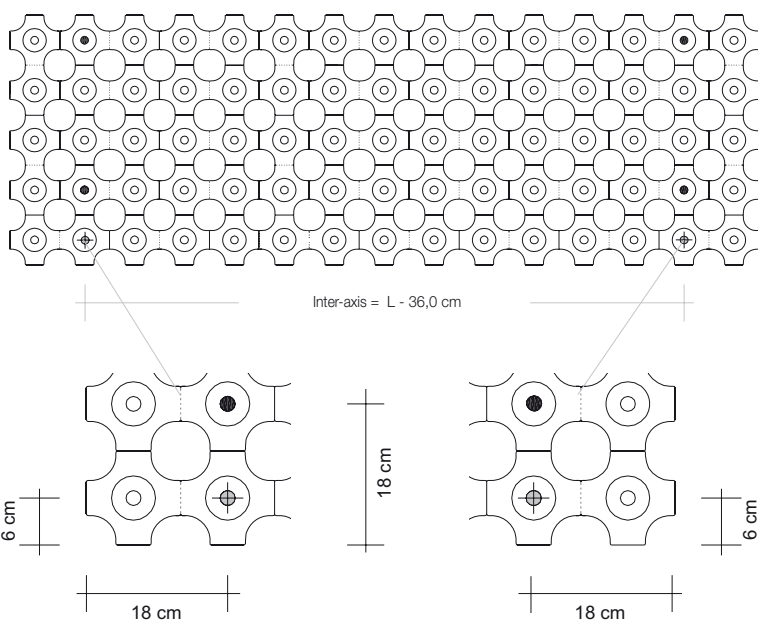
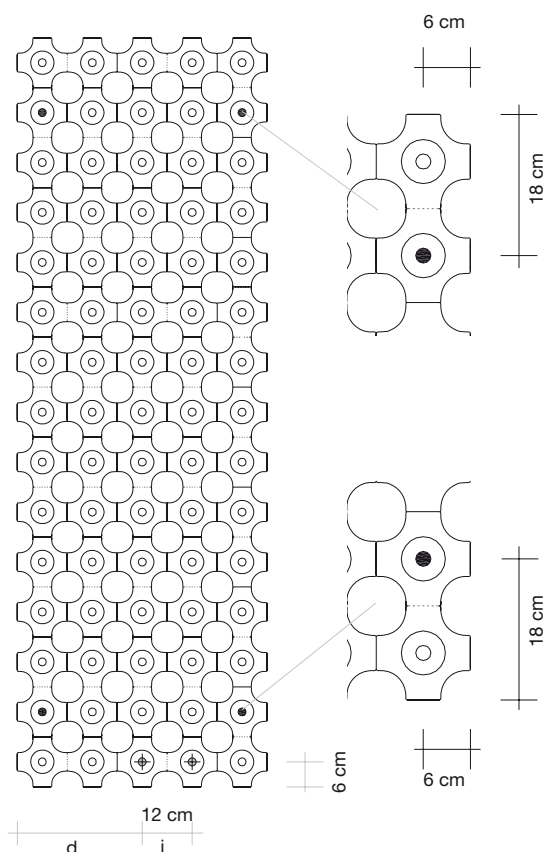
The add_on model in all its versions is supplied exclusively in RAL 9010 or Glossy Black (code NELC) without any variation in price.

PACKING

The cardboard packing box is included in the price of sale of the products, and it contains the complete wall fixing kit and the manual vent valve

CONNECTORS

The add_on model is connected to the heating system with the remote connection Valve and Lockshield (GVR) supplied as an ACCESSORY. To fully understand how to arrange for installation see the GVR connection diagram in page 2.



- i = Inter-axis between the connectors for system connection (see GVR connection diagram)
- d = the distance between the left side of the radiator and the centre of the first connector varies according to the width of the radiator, specifically:
 L. 36 and 48 cm d = 18 cm
 L. 60 and 72 cm d = 30 cm
 L. 84 and 96 cm d = 42 cm
- Position of wall fixing support
- ⊕ Position of connector for connecting to the system (see GVR connection diagram)

The drawing above represents the front view of the radiator, the position of the connectors for connection to the water system and the supports for wall fixing are clearly indicated.

VERTICAL

Height		120	144	168	192	216	240
Code	Width (cm)	Watts ΔT 50°C	Watts ΔT 50°C	Watts ΔT 50°C	Watts ΔT 50°C	Watts ΔT 50°C	Watts ΔT 50°C
AD_R#	36,0	410	494	579	665	752	839
	48,0	534	644	754	866	979	1093
	60,0	651	785	920	1057	1195	1334
	72,0	762	919	1077	1237	1399	1562
	84,0	866	1045	1225	1407	1591	1777
	96,0	964	1163	1364	1567	1772	1979

HORIZONTAL

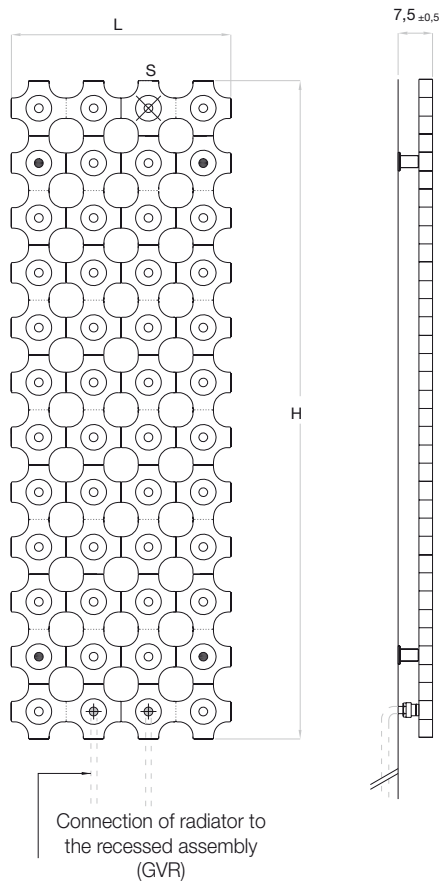
Width		120	144	168	192	216	240
Code	Height (cm)	Watts ΔT 50°C	Watts ΔT 50°C	Watts ΔT 50°C	Watts ΔT 50°C	Watts ΔT 50°C	Watts ΔT 50°C
AD_RO#	36,0	410	494	579	665	752	839
	48,0	534	644	754	866	979	1093
	60,0	651	785	920	1057	1195	1334
	72,0	762	919	1077	1237	1399	1562
	84,0	866	1045	1225	1407	1591	1777
	96,0	964	1163	1364	1567	1772	1979

Valve assembly for remote connection (GRV)

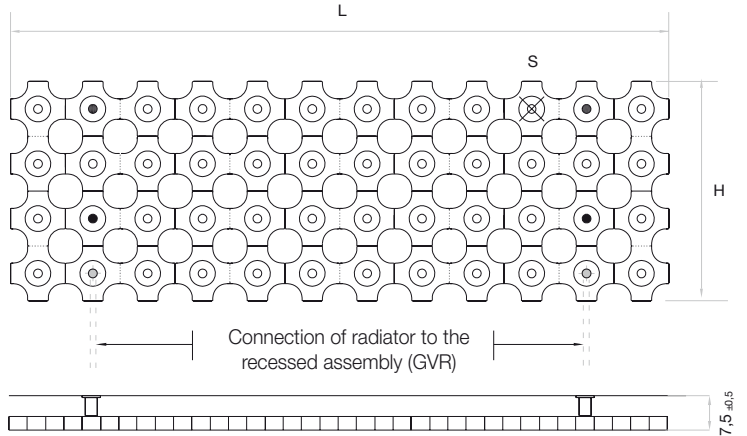
Includes the complete Valve and Lockshield assembly for remote connection (GVR), can be installed up to a maximum distance of 6 metres from the radiator.

Model	Description	Colour
GVR_AD#19010	RECESSED valve and lockshield assembly for remote connection for add_On	white ral 9010
GVR_AD#1NELC	RECESSED valve and lockshield assembly for remote connection for add_On	brilliant black

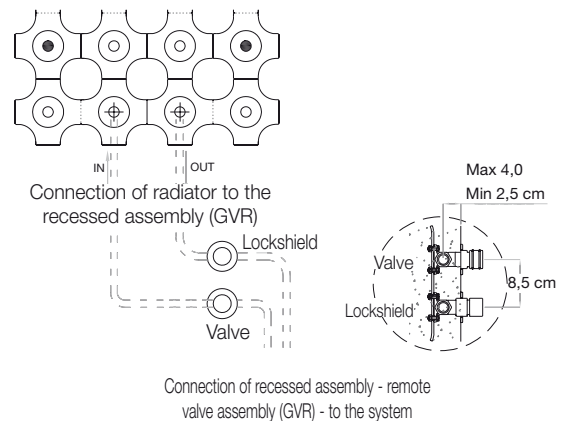
VERTICAL (cod. AD_R)



HORIZONTAL (cod. AD_RO)



GVR connection diagram



Kalmar add_on free shape

VERSIONS AVAILABLE

- WATER

COLOURS

The add_on model in all its versions is supplied exclusively in RAL 9010 or Glossy Black (code NELC) without any variation in price.

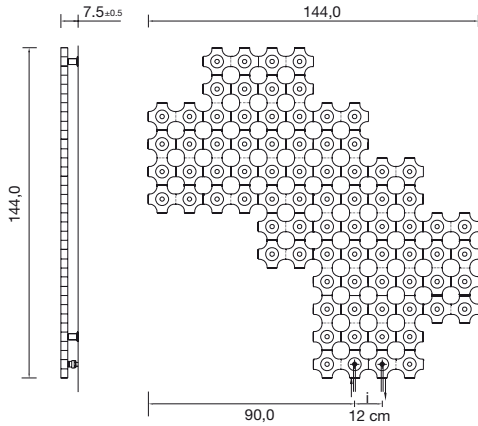
PACKING

The cardboard packing box is included in the price of sale of the products, and it contains the complete wall fixing kit and the manual vent valve

CONNECTORS

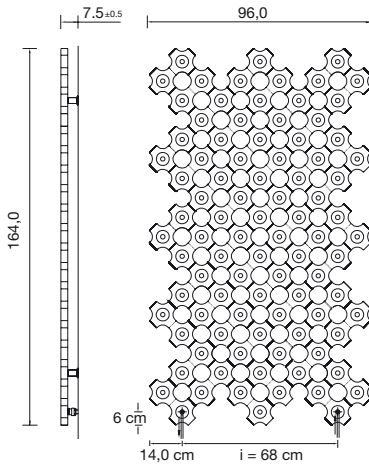
The add_on model is connected to the heating system with the remote connection Valve and Lockshield (GVR) supplied as an ACCESSORY. To fully understand how to arrange for installation see the GVR connection diagram in page 2.

L1 free form



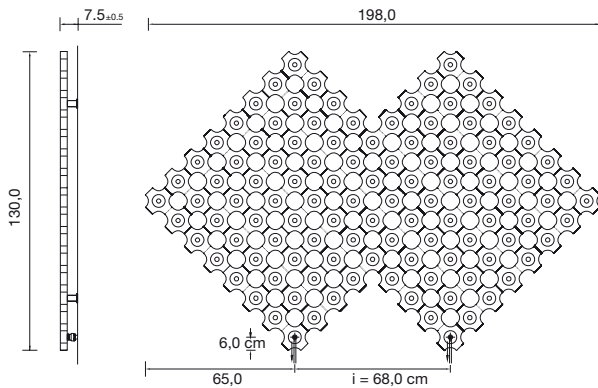
Code	H (cm)	L (cm)	Watts ΔT 50°C Coloured version
AD_F#01	144,0	144,0	969

L4 free form



Code	H (cm)	L (cm)	Watts ΔT 50°C Coloured version
AD_F#04	164,0	96,0	1120

L3 free form



Code	H (cm)	L (cm)	Watts ΔT 50°C Coloured version
AD_F#03	130,0	198,0	1371

The drawings above represent the front view of the radiator, the position of the connectors for connection to the water system are clearly indicated.

Kalmar add_on recessed version

Watt = Kcal/h ÷ 0,860
 Kcal/h = Watt x 0,860

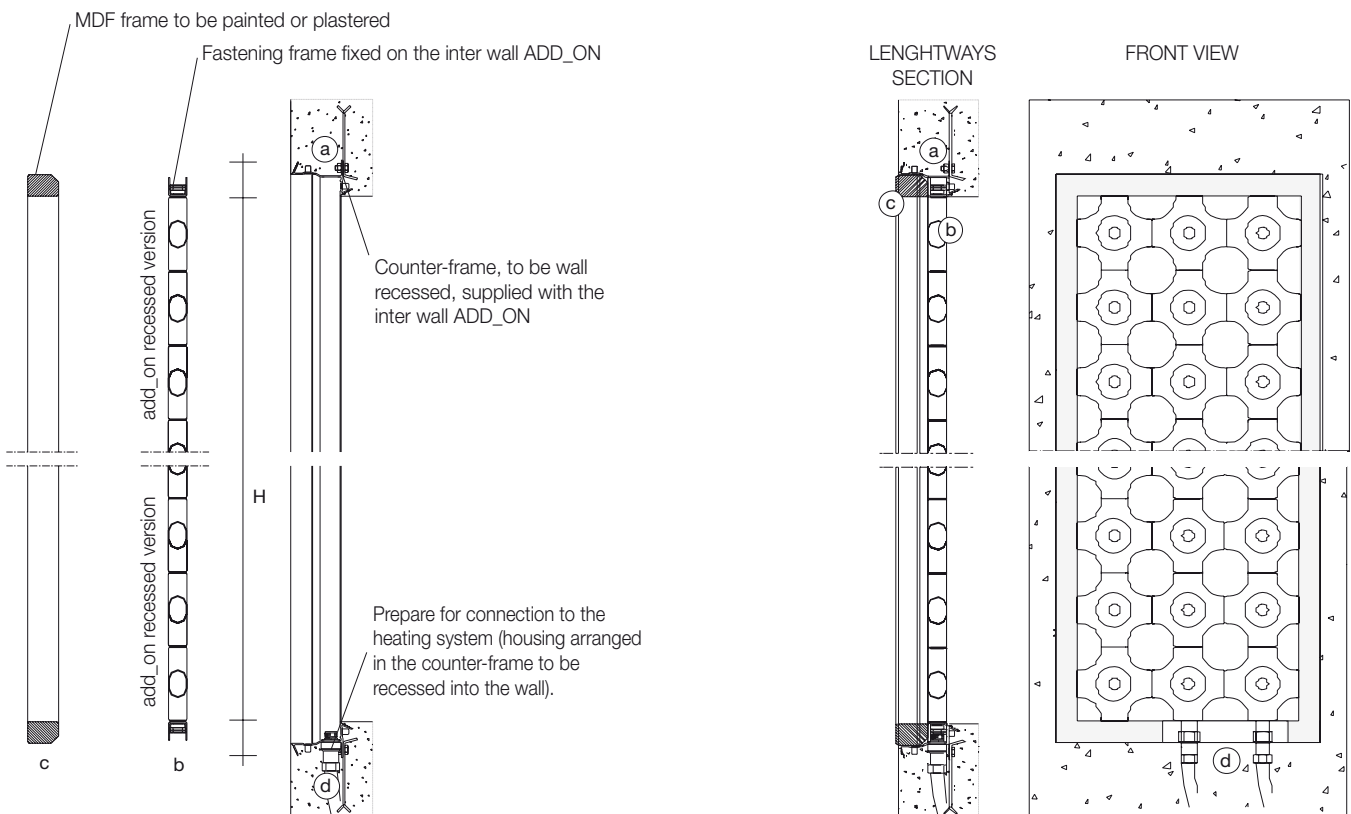
The add_on inter wall model is a special model installed inside a wall like a partition or something similar to a window between two areas. To mount this model you need to install a counter-frame (included in the price) when the brickwork is not finished (still not coated with plaster). After having arranged for installation and completed the wall finish you can install the model and properly connect it to the heating system. You can mount and remount the radiator at any time by simply disassembling the MDF frame (unpainted).

VERTICAL

Height		120		144		168		192		216		240	
Code	Width (cm)	Watts ΔT 50°C		Watts ΔT 50°C		Watts ΔT 50°C		Watts ΔT 50°C		Watts ΔT 50°C		Watts ΔT 50°C	
AD_RI#	36,0	410		494		579		665		752		839	
	48,0	534		644		754		866		979		1093	
	60,0	651		785		920		1057		1195		1334	
	72,0	762		919		1077		1237		1399		1562	
	84,0	866		1045		1225		1407		1591		1777	
	96,0	964		1163		1364		1567		1772		1979	

HORIZONTAL

Width		120		144		168		192		216		240	
Code	Height (cm)	Watts ΔT 50°C		Watts ΔT 50°C		Watts ΔT 50°C		Watts ΔT 50°C		Watts ΔT 50°C		Watts ΔT 50°C	
AD_ROI#	36,0	410		494		579		665		752		839	
	48,0	534		644		754		866		979		1093	
	60,0	651		785		920		1057		1195		1334	
	72,0	762		919		1077		1237		1399		1562	
	84,0	866		1045		1225		1407		1591		1777	
	96,0	964		1163		1364		1567		1772		1979	



Intra-wall mounting

1. install the add_on counter-frame (a) in the un-plastered wall, carefully following the installation instructions
2. Arrange for connection to the heating system (d)
3. Mount the add_on with fixing frame (b) in the counter-frame (a).
4. Connect the add-on to the connection arrangement of the heating system (d)
5. Mount the MDF cover and fastening frame(c) of Intra-wall add_on
6. Paint the MDF frame (c) or plaster with the required wall finish.

CONNECTOR DIAGRAMS

The add_on inter wall model has the same choice of connectors as the normal add_on model. For inter-axes and connection diagrams refer to the charts in page 14.